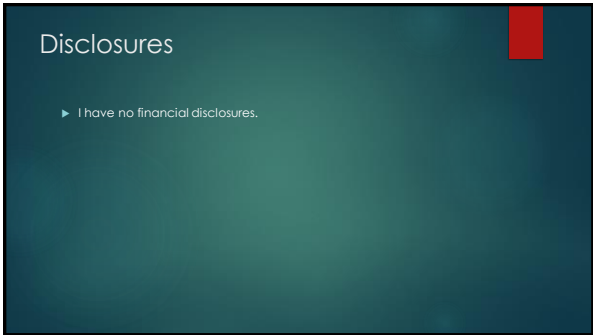


1



2



3

Evidence that it WORKS!

- ▶ Kentucky – reduced multiple provider episodes by 50%
- ▶ In 2016 a review of 24 states resulted in 30% reduction in rate of schedule II opioid prescriptions
- ▶ In 2010 Ohio demonstrated a decrease in prescriptions or no prescription in 61% of queries
- ▶ Florida saw a 24% decline in oxycodone prescriptions
- ▶ Analysis of 10 states showed overall reduction in opioid volumes prescribed
- ▶ PDMP query results in increased referral for management
- ▶ Reduced overdose deaths

10

What Exactly is the PDMP?

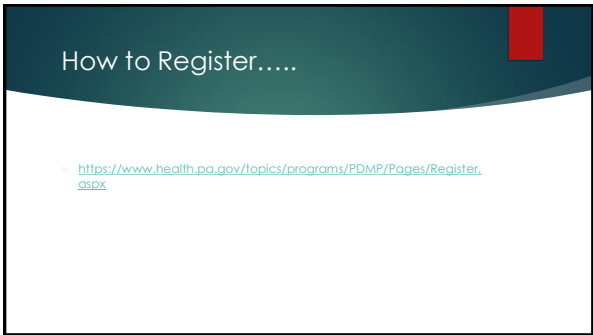
- As of Jan 1, 2017 all licensed individuals who are lawfully authorized to prescribe, distribute, dispense or administer a controlled substance in PA are **REQUIRED** to register with the program.
- Prescribers can delegate authority to individuals in their employment or under their supervision
- Delegates need to have their own account
- Prescribers are **REQUIRED** to query the PDMP in 3 clinical situations:
 - The first time the patient is prescribed a controlled substance
 - Each time the patient is prescribed an opioid or benzodiazepine
 - If a prescriber believes or has reason to believe that a patient is misusing or diverting drugs

11

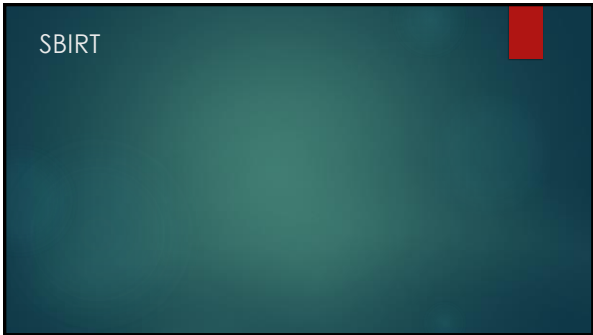
Pharmacists and the PDMP

- Pharmacists are also required to register with the PDMP
- Also may designate a delegate
- Dispensers **MUST** query the PDMP before dispensing an opioid or benzodiazepine when a patient:
 - Is new to the pharmacist
 - Has insurance but chooses to pay for prescriptions with cash
 - Requests an early refill
 - Has opioid and/or benzodiazepine prescriptions from more than one prescriber

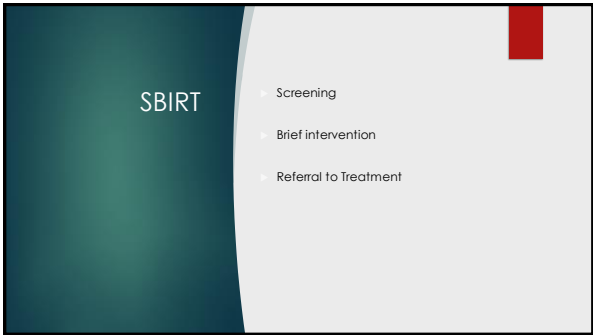
12



13



14



15

Screening

- ▶ PDMP may be first screening tool
- ▶ Screening Tools for Adult Patients
 - ▶ The Alcohol, Smoking, and Substance Involvement Screening Test – 8 questions
 - ▶ The CAGE Questions Adapted to Include Drugs Tool – Cut down, Annoyed, Guilty, and Eye-opener
- ▶ Screening Tool for Pregnant Patient
 - ▶ The Institute for Health and Recovery Integrated Screening Tools: S.P.I. Screening Tool – Parents, Peers, Partner, Past and Present
- ▶ Screening Tool for Adolescents
 - ▶ The CRAFT Screening Tool – Car, Relax, Alone, Forget, Friends, Trouble

16

Brief Intervention

- ▶ Beginning – Middle – End
- ▶ Three Basic Components of Motivational Interviewing
 - ▶ Spirit: Collaboration, Acceptance, Evocation, Compassion
 - ▶ Skills: Open-ended questions, affirmations, reflections, summaries
 - ▶ Strategy: Engaging, focusing, evoking, planning

17

Brief Intervention – for patient with suspected Substance Use Disorder

- ▶ **1. Build Rapport and Raise the subject: Ask permission to discuss his/her drug use. Use open-ended questions.**
 - ▶ “Thank you for answering the screening questions. Can we discuss them together?”
 - ▶ “Describe a typical day in your life. How does your drug use fit into your routine?”
 - ▶ “What are some things you enjoy about your drug use? What are some of the things that you do not enjoy about your drug use?”

18

Brief Intervention

- ▶ **2. Provide Feedback: Ask permission to relay information and discuss results of screening. Discuss connections between substance use and behaviors and known consequences to those behaviors.**
- ▶ “In order to prevent new health problems from forming or prevent current problems from getting worse, I recommend all my patients drink less than the low-risk limits and abstain from using drugs.”
- ▶ “Many patients who score this highly are at an elevated risk of social or legal problems, as well as illness and injury. Can I talk to you about some of these risks?”
- ▶ “There are many different reasons you could be feeling this way. Can I ask you some questions so we can figure this out?”

19

Brief Intervention

- ▶ **3. Build Readiness to Change: Use readiness ruler.**
- ▶ 0 – 1 – 2 – 3 – 4 – 5 – 6 – 7 – 8 – 9 – 10
- ▶ “On a scale of 1-10, with 0 being not ready at all and 10 being extremely ready, how ready and confident are you that you can change your behavior?”
- ▶ “It’s okay if you do not feel ready to make this change. Would you like to discuss some other options?”
- ▶ “So you feel you are at a 6 in terms of readiness to address your use of prescription opioid medications. Can you tell me your thoughts behind that answer? Why didn’t you choose a lower number?”

20

Brief Intervention

- ▶ **4. Negotiate a Plan for Change: include a plan for reducing use to low-risk levels and an agreement to follow-up with specialty treatment services (Warm Hand-off coming up).**
- ▶ “What steps do you think you can take that will help you reach your goal of reducing your drug use to low-risk levels?”
- ▶ “Those are great ideas! Can we write down your plan so that you can refer to it in the future?”
- ▶ “Can we schedule a follow-up appointment to see how you are doing?”
- ▶ “It’s really great that you came in and talked to me about this. Let’s review what we discussed.”

21

POLAR*S Model for Patient-Centered Communication

- ▶ Permission
- ▶ Open-Ended Questions
- ▶ Listen Reflectively
- ▶ Affirmation
- ▶ Roll with Ambivalence
- ▶ Summarize Plans

22

Referral to Treatment

- ▶ “Warm Handoff”
- ▶ Directly contact a substance use disorder treatment provider and solidify an appointment with patient present.
 - ▶ Be careful who you refer to – there are many different “practitioners” out there
- ▶ Stay positive and nonconfrontational
- ▶ Expect resistance – don’t allow it to upset you – express concern

23

The screenshot shows the PDMP website interface for professionals. It includes a navigation menu with options like 'ABOUT DDAP', 'GET HELP NOW', 'FINDING RESOURCES', 'FOR PROFESSIONALS', and 'FOR PATIENTS'. A central search box is visible with the text 'SEARCH FOR SINGLE COUNTY AUTHORITY'. Below the search box, there are several links: 'FIND YOUR COUNTY SINGLE & LOCAL OFFICE', 'FIND A TREATMENT PROVIDER', 'VIEW OR DOWNLOAD REPORTS AND', 'FIND SUPPORT SERVICES', and 'FIND ONLY THE SINGLE COUNTRIES'. On the right side, there are buttons for 'DATA CALIBRATED', 'EDMP TRAINING', and 'CONTACT US NOW'. At the bottom of the page, it says 'Single County Authorities' and provides the URL: [HTTPS://WWW.DDAP.PA.GOV/PROFESSIONALS/PAGES/FOR_SCAS.ASPX](https://www.ddap.pa.gov/professionals/pages/for_scas.aspx)

24

References:

- ▶ Evidence-Based Prescribing: Tools You Can Use to Fight the Opioid Epidemic. Pennsylvania Department of Health, 2017
- ▶ www.health.pa.gov website

25

“
More to Come Later!!
”

Questions?

26
